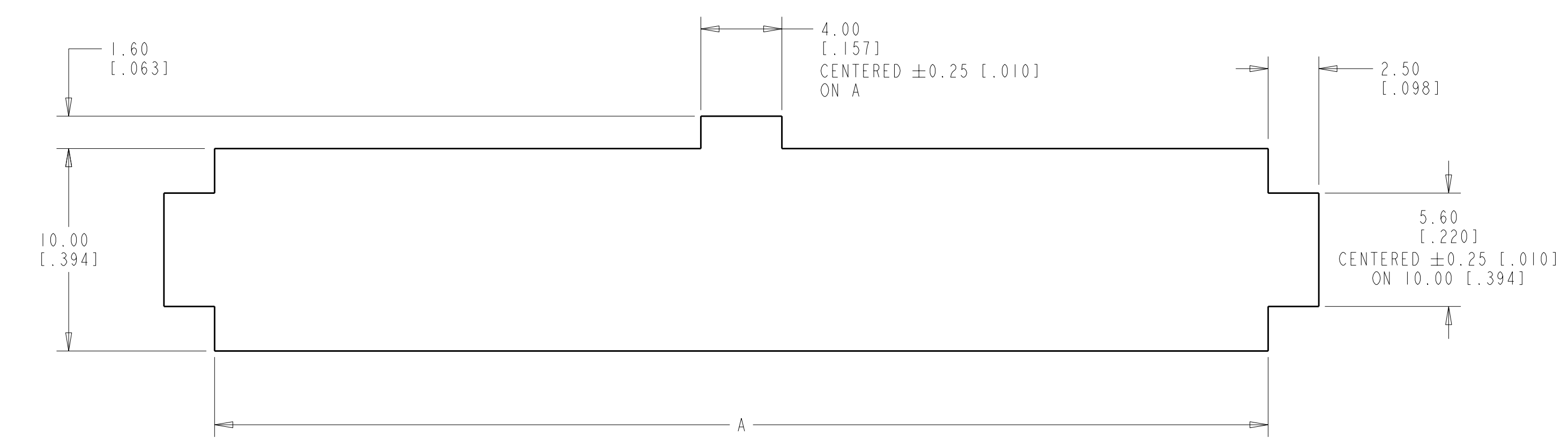
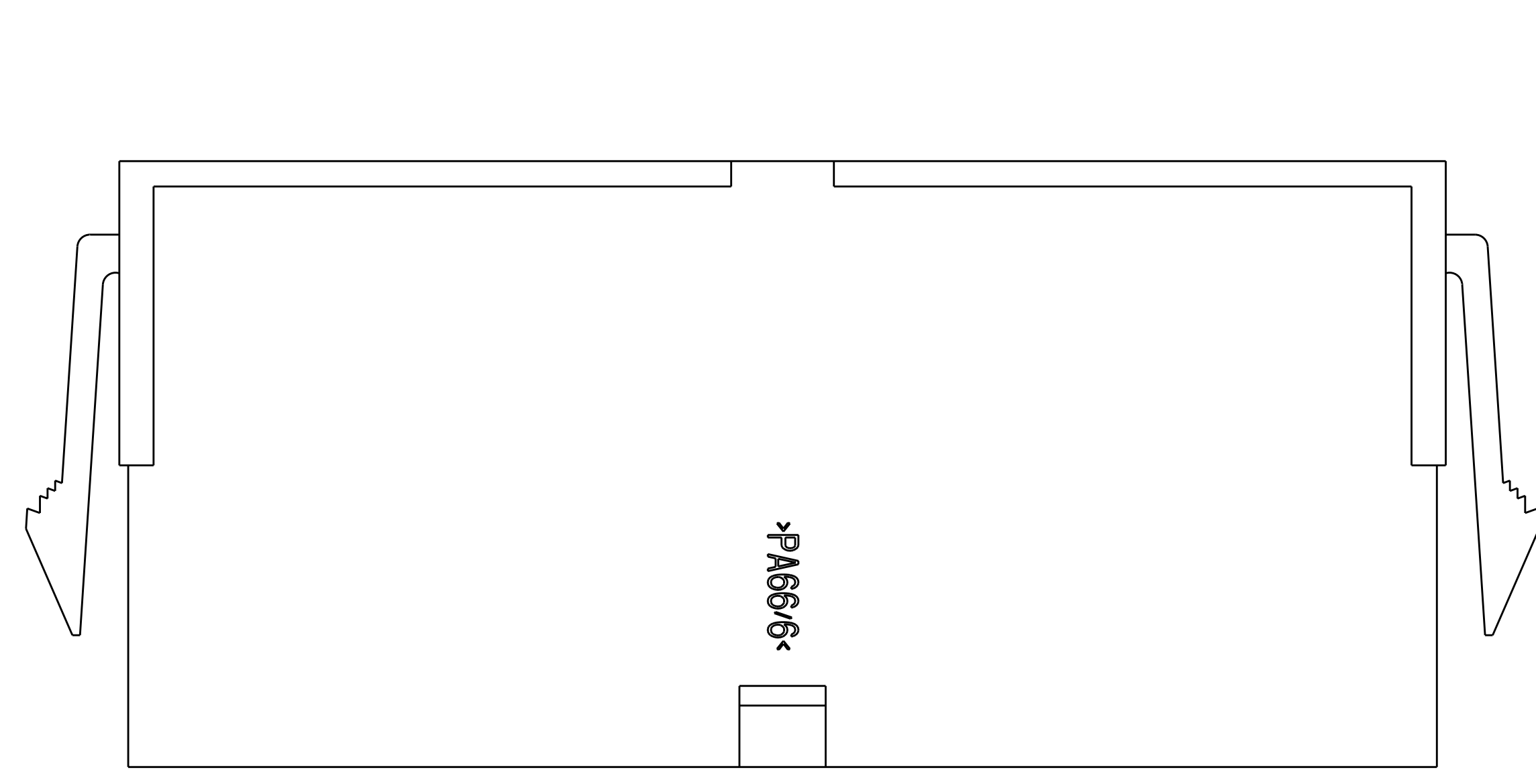
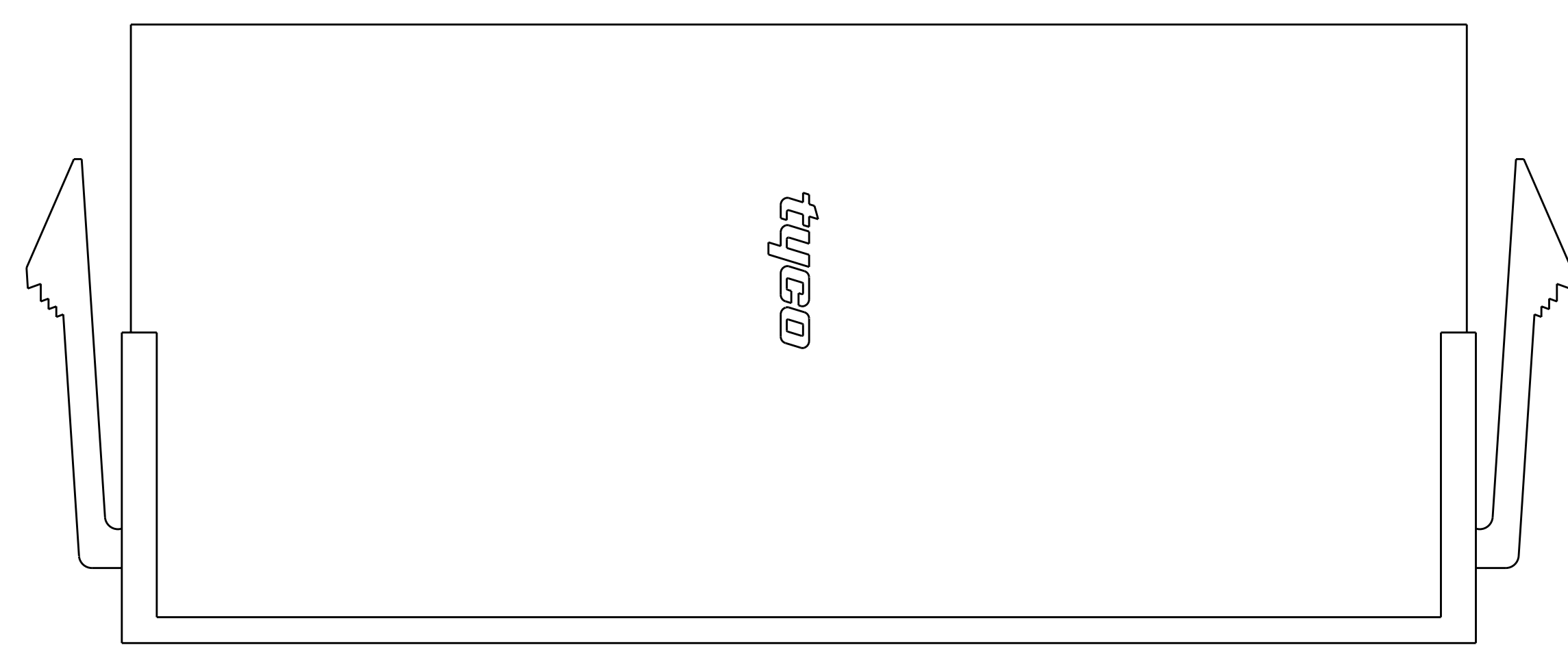
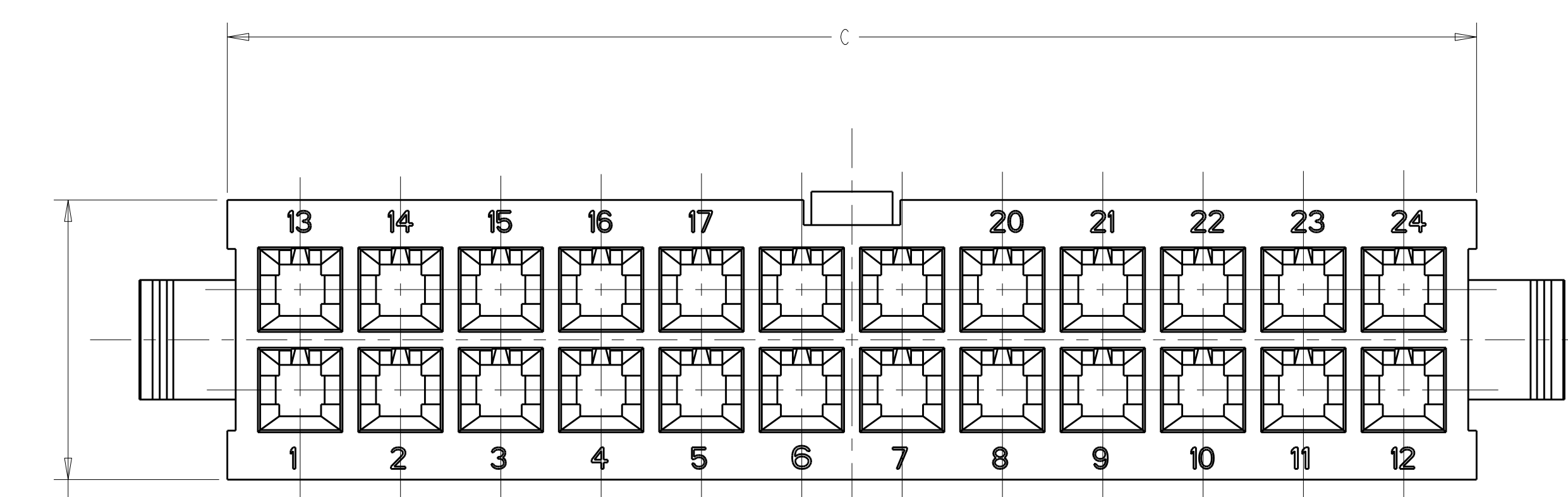
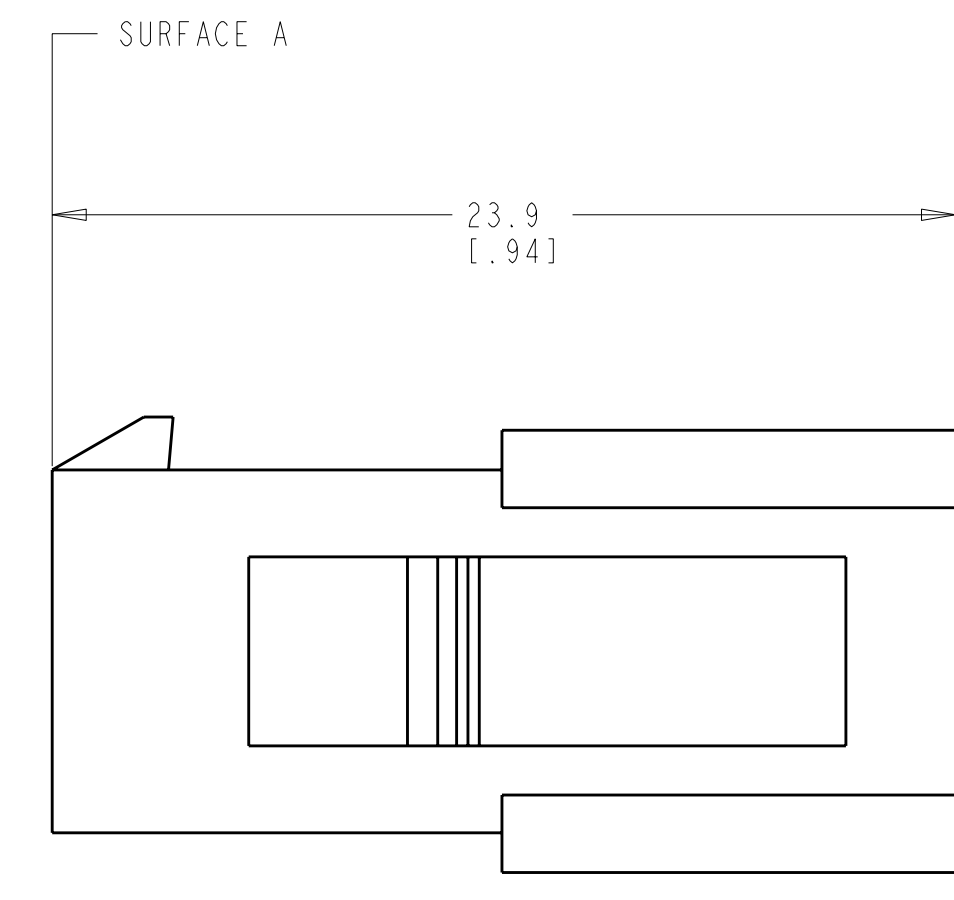
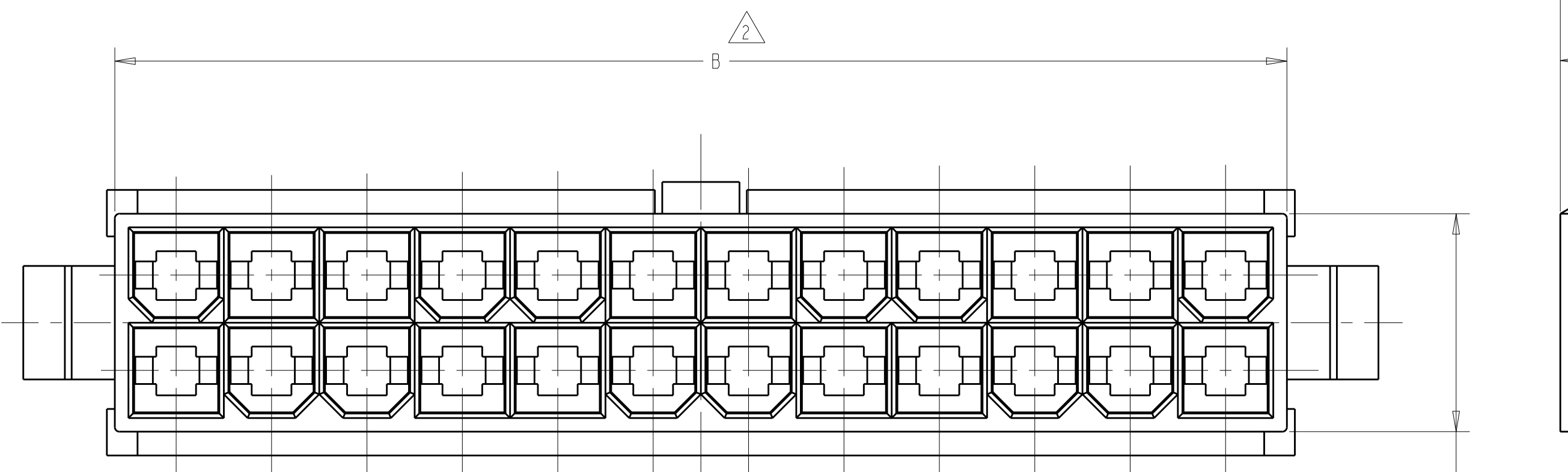


LOC	DIST	REV	DATE	BY	CHK	APPV
CM	00	C	11NOV2009	HMR	KR	



RECOMMENDED CUT OUT  
 FOR 2.00 [.079] MAX. THICK PANEL



- △ NYLON, UL94V-0, NATURAL (WHITE).
- △ DIMENSION TO BE CHECKED AT SURFACE A.
- 3. DIMENSIONS IN BRACKETS ARE IN INCHES.
- 4. MALE CONTACTS MUST BE INSERTED SO THAT THE TOP OF THE WIRE AND INSULATION CRIMPS ARE FACING THE SIDE OF THE HOUSING WITH THE LOCKING LATCH.
- 5. RECOMMENDED MAX. PANEL THICKNESS 2.00 [.079].
- 6. PANEL MUST BE PUNCHED SO THAT THE HOUSING ENTERS THE PANEL IN THE SAME DIRECTION AS THE PUNCH.

C	B	A	NO. OF POSITIONS	PART NUMBER
52.3[2.059]	51.6[2.032]	52.00[2.047]	24	2-794598-4
48.1[1.894]	47.4[1.866]	47.80[1.882]	22	2-794598-2
43.9[1.728]	43.2[1.701]	43.60[1.717]	20	2-794598-0
39.7[1.563]	39[1.535]	39.40[1.551]	18	1-794598-8
35.5[1.398]	34.8[1.370]	35.20[1.386]	16	1-794598-6
31.3[1.232]	30.6[1.205]	31.00[1.220]	14	1-794598-4
27.1[1.067]	26.4[1.039]	26.80[1.055]	12	1-794598-2
22.9[.902]	22.2[.874]	22.60[.889]	10	1-794598-0
18.7[.736]	18[.709]	18.40[.724]	8	794598-8
14.5[.571]	13.8[.543]	14.20[.559]	6	794598-6
10.3[.406]	9.6[.378]	10.00[.394]	4	794598-4
6.1[.240]	5.4[.213]	5.80[.228]	2	794598-2

4805 (2/09) P&E/ENGINEER DRAWING

**METRIC**

DIMENSIONS: mm [INCHES]	TOLERANCES UNLESS OTHERWISE SPECIFIED: 9 PLC ± 8 PLC ±0.2 [0.01] 5 PLC ± 4 PLC ± ANGLES ± FINISH	DWN S. HOOVER 11-OCT-2004 CHK D. COLEY 11-OCT-2004 APPV D. COLEY 11-OCT-2004	AMP Incorporated Harrisburg, PA 17105-3608
MATERIAL		PRODUCT SPEC	NAME
		APPLICATION SPEC	PLUG, PANEL MOUNT, 2 TO 24 POSITION, AMP-DUACTM POWER CONNECTOR
		WEIGHT	SIZE CAGE CODE DRAWING NO. RESTRICTED TO
		CUSTOMER DRAWING	A1 00779 C=794598

SCALE 4:1 SHEET 1 OF 1 REV C